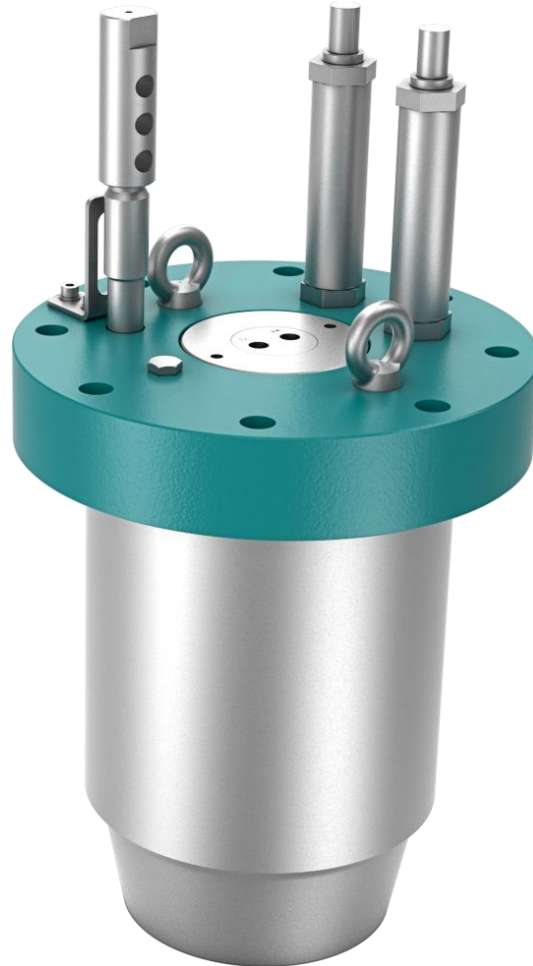


ROTOR LOCK HY-200-75

A rotor lock is a hydraulic, mechanical or electrically powered safety mechanism used during maintenance or emergencies. An active rotor lock prevents the rotation of the rotor blades of a wind turbine.



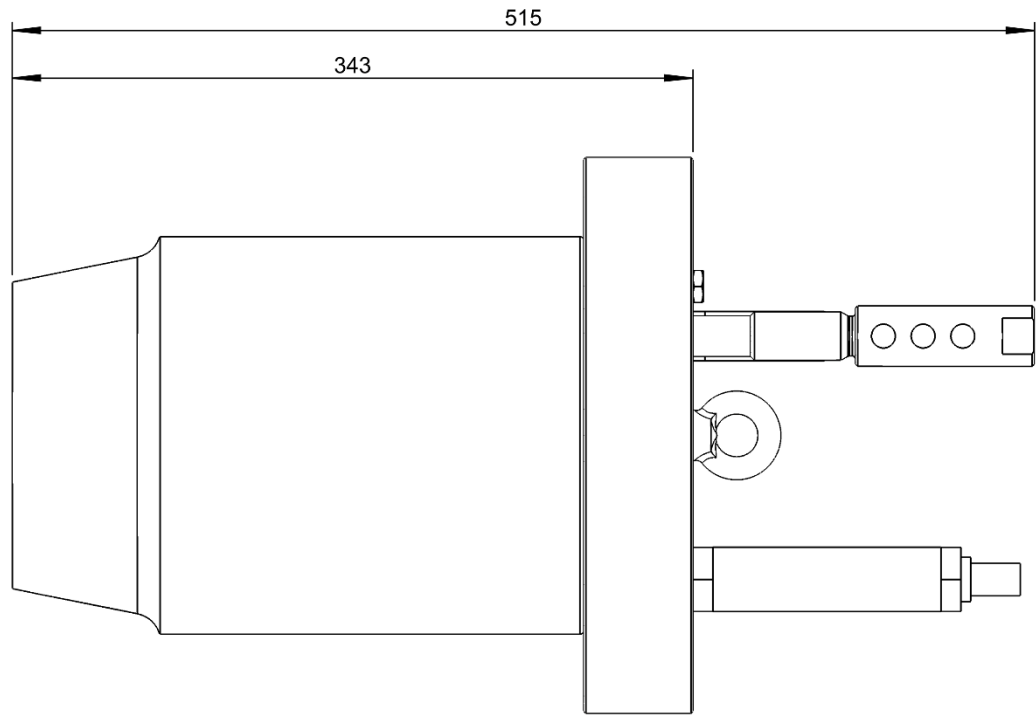
FEATURES

- Hydraulic powered by Trebu HPU's
- Compact and maintenance-free design
- Additional mechanical block
- Additional pilot operated non return valves
- Locked / unlocked electrical positioning signal
- Additional redundant position signal possible
- Easy apply of lock pin due to conical shaft-end
- Lifting eyes for good handling and fitting
- Standard or offshore design
- Offshore protection as per ENI 2944

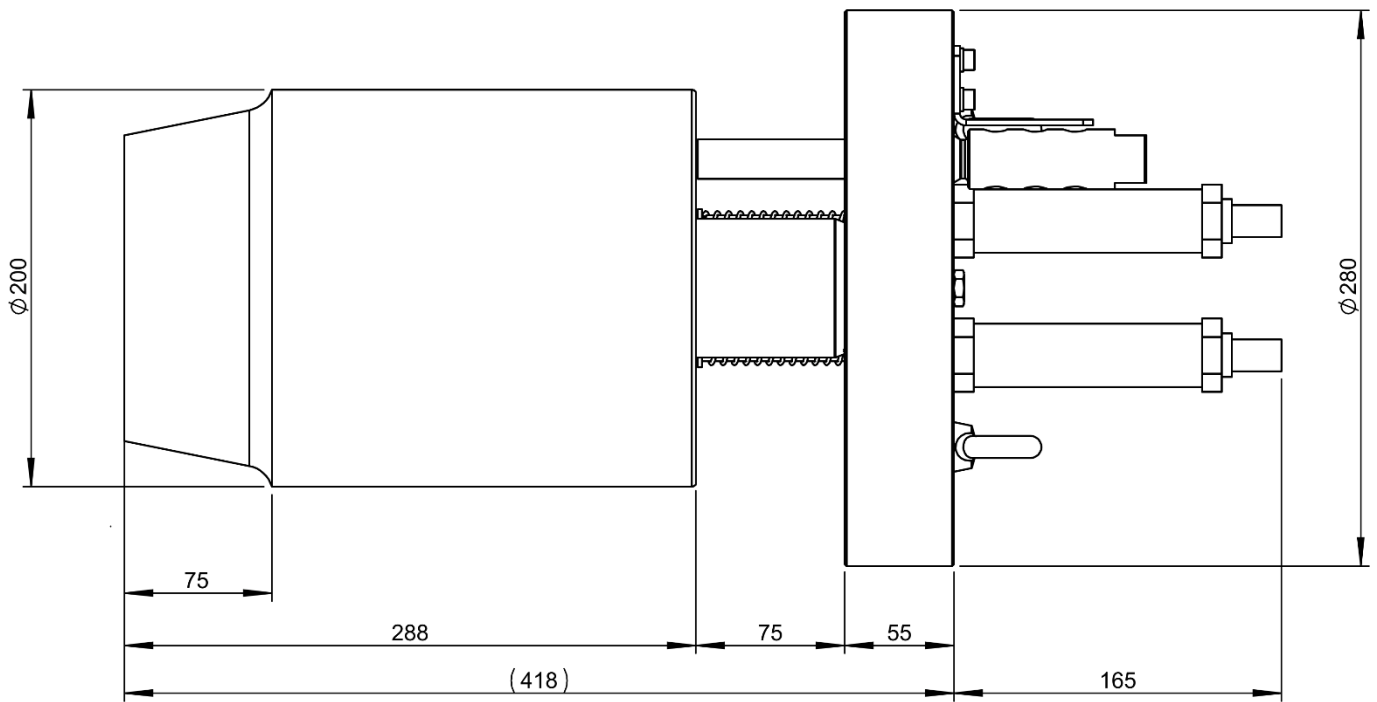
SPECIFICATIONS

	VALUE	UNIT
ARTICLE NUMBER	20-1493	-
WEIGHT	± 87	Kg
NOMINAL PRESSURE	16	MPa
MAXIMUM PRESSURE	25	MPa
PISTON AREA – RETRACTED	65,4	cm ²
PISTON AREA – EXTENDED	103,9	cm ²
MAXIMUM STROKE	75	mm
TEMPERATURE RANGE	-40 / +85	°C
LOCK PIN MATERIAL	42CrMo4+QT	-

GENERAL DIMENSIONS



ROTOR LOCK
 MINIMUM STROKE POSITION



ROTOR LOCK
 MAXIMUM STROKE POSITION

Trebu reserves the rights of modification without prior notification