

HPU – YB RB RL

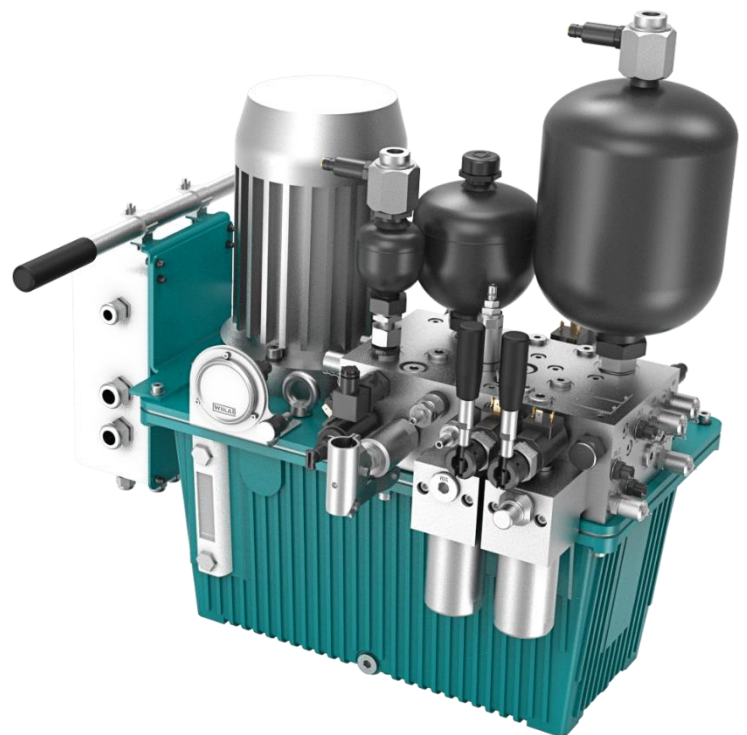
A hydraulic power unit converts mechanical- to hydraulic energy to power industrial equipment. A HPU uses an electric motor driving a hydraulic pump to pressurizes fluid. The pressurized fluid is applied in mechanical equipment, such as braking systems delivered by Trebu.

FEATURES

- HPU controls Trebu Yaw & Rotor brakes & Rotor locks
- Collaborating with multiple consumers & components
- Variable working pressures possible per specification
- Easy installation with quick connectors
- Efficient cooling reducing heat production
- Lower noise and vibration levels than conventional HPU's
- Operate rotor lock manually by with headless valve
- Safety features to prevent accidental rotor lock operation
- Junction box
- Easy PLC connectability and control
- Instant action feedback on pressure gauges
- Oil in tank level-eye display
- Fast braking and retraction time for reliable operation
- Lifting eyes for easy handling and fitting

OPTIONS

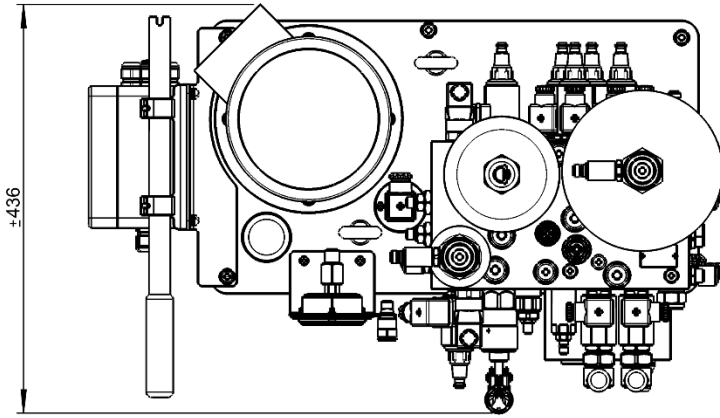
- Switches & sensors
- Connectors & cables
- Filter elements
- Steel manifold



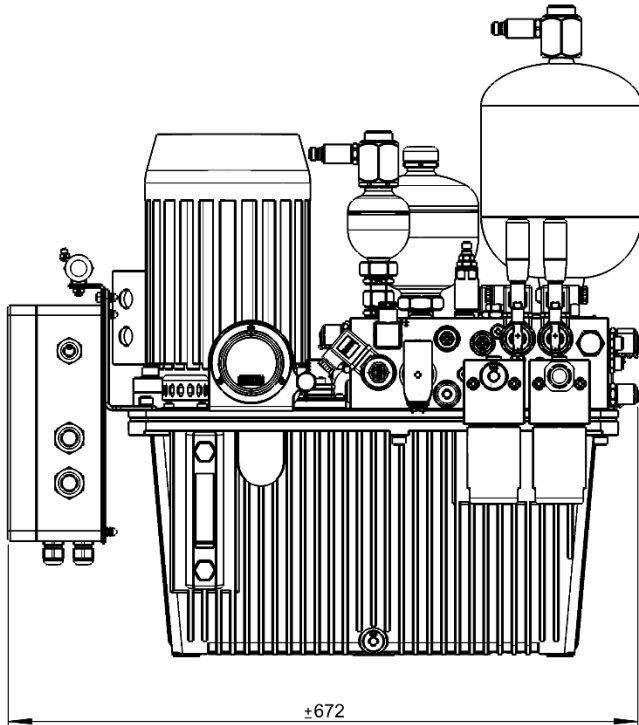
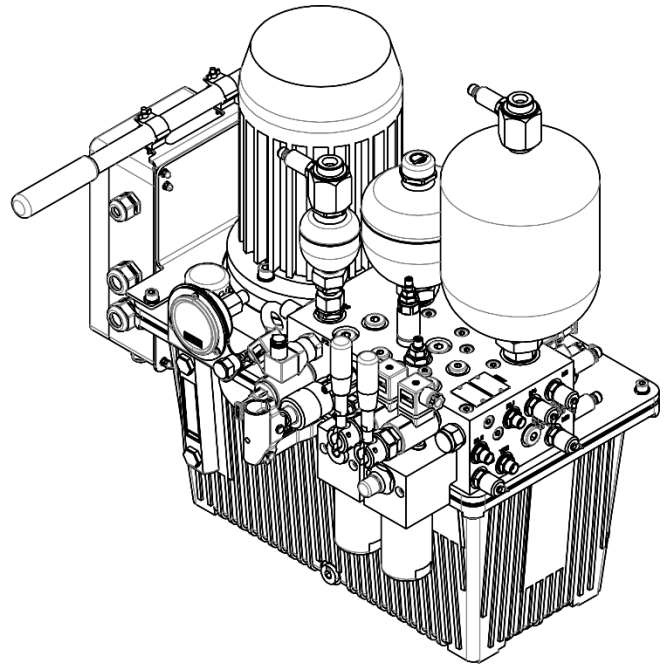
SPECIFICATIONS	VALUE	UNIT
ARTICLE NUMBER	10-1160	-
WEIGHT (WITH OIL)	68	Kg
NOMINAL PRESSURE	22,5	MPa
MAXIMUM PRESSURE	24	MPa
PUMP CAPACITY (AT 1500 RPM)	2,8	L / min.
MOTOR TYPE	Asynchronous IE2	
MOTOR POWER	1,1	kW
MOTOR VOLTAGE	230 / 400	V
MOTOR FREQUENCY	50 / 60	Hz

SPECIFICATIONS	VALUE	UNIT
MOTOR SPEED	1420	rpm
MOTOR PHASES	3	-
TANK CAPACITY	20	L
HAND PUMP CAPACITY	10,6	cc / stroke
HYDRAULIC OIL	ISO-V6 46	-
TEMPERATURE RANGE	-40 / +70	°C
CORROSIVITY CLASS	C3 EN ISO 12944-2	
PAINT COLOUR	5021	RAL
HYDRAULIC SCHEME	PH-22173.1	-

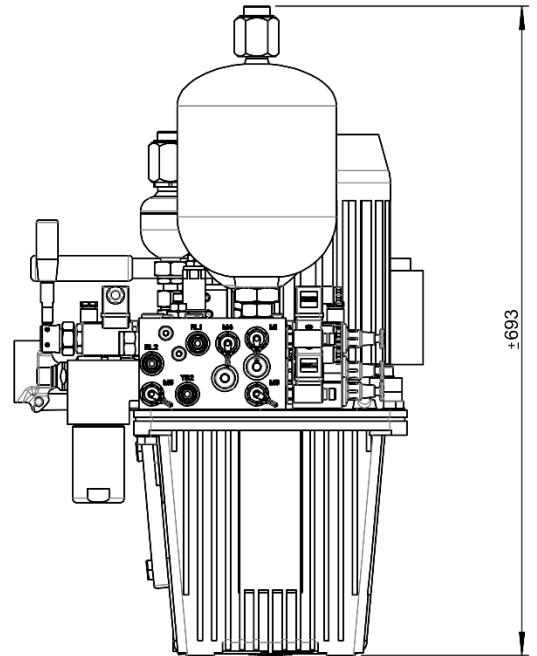
GENERAL DIMENSIONS



TOP VIEW
 SCALE 1:7



FRONT VIEW
 SCALE 1:7



RIGHT VIEW
 SCALE 1:7

Trebu reserves the rights of modification without prior notification